

BALDOR • RELIANCE

Customer information packet

VJPFPM2538T-5

40HP, 3500RPM, 3PH, 60HZ, 286JP, 3954M, OPSB, F

Class - None

Division - Not Applicable

Specifications

Enclosure	OPSB
Frame	286JP
Frame Material	Steel
Frequency	60.00 Hz
Motor Letter Type	Three Phase
Output @ Frequency	40.000 HP @ 60 HZ
Phase	3
Synchronous Speed @ Frequency	3600 RPM @ 60 HZ
Voltage @ Frequency	575.0 V @ 60 HZ
XP Class and Group	None
XP Division	Not Applicable
Agency Approvals	UL CSA EEV
Ambient Temperature	40 °C
Auxillary Box	No Auxillary Box
Auxillary Box Lead Termination	None
Base Indicator	No Mounting
Bearing Grease Type	Polyrex EM (-20F +300F)
Blower	None
Current @ Voltage	36.000 A @ 575.0 V
Design Code	B
Drip Cover	Drip Cover
Duty Rating	CONT
Efficiency @ 100% Load	91.7 %
Electrically Isolated Bearing	Not Electrically Isolated
Feedback Device	NO FEEDBACK
Front Face Code	Drip Cover Mounting
Front Shaft Indicator	None
Heater Indicator	No Heater
High Voltage Full Load Amps	36.0 a
Insulation Class	F
Inverter Code	Not Inverter

Part detail

Revision	N
Type	AC
Mech. spec.	39T043
Base	
Status	PRD/A
Elec. spec.	39WGX991
Layout	39LYT043
Eff. date	07-12-2023
CD Diagram	CD0382
Poles	02
Leads	6#10
Proprietary	False
Created date	07-21-2016

KVA Code	G
Lifting Lugs	Vertical Lifting Lugs
Locked Bearing Indicator	Locked Bearing
Motor Lead Exit	Ko Box
Motor Lead Quantity/Wire Size	6 @ 10 AWG
Motor Lead Termination	Flying Leads
Motor Standards	NEMA
Motor Type	3954M
Mounting Arrangement	F1
Number of Poles	2
Overall Length	31.44 IN
Power Factor	91
Product Family	Fire Pump Motor
Pulley End Bearing Type	Ball
Pulley Face Code	C-Face
Pulley Shaft Indicator	Tapped & Key
Rodent Screen	Included
Service Factor	1.15
Shaft Diameter	1.250 IN
Shaft Extension Location	Pulley End
Shaft Ground Indicator	No Shaft Grounding
Shaft Rotation	Reversible
Shaft Slinger Indicator	Shaft Slinger
Speed	3500 rpm
Speed Code	Single Speed
Starting Method	Wye Start - Delta Run
Thermal Device - Bearing	None
Thermal Device - Winding	None
Vibration Sensor Indicator	No Vibration Sensor
Winding Thermal 1	None
Winding Thermal 2	None

Nameplate

NP3454L

CAT.NO.	VJPFPM2538T-5	CUST P/N		I.P.	23
SPEC.	39T043X991H2	SER.NO.		FRAME	286JP
HZ	60	HP	40	RPM	3500
VOLTS	575	CODE	G	VOLTS	
AMPS	36	DES	B	AMPS	
EFF	91.7	SER.F.	1.15	PF	91
RATING	40C AMB-CONT	DE BRG	6312	GREASE	POLYREX EM
BLANK		ODE BRG	6208	MTR. WT.	303
		CLASS	F	PH	3
		ENCL	OPSB	CC	010A
HTR-VOLTS		HTR-AMPS		HTR-WATTS	

AC Induction Motor Performance Data

Record # 58306

Typical performance - not guaranteed values

Winding: 39WGX991-R001		Type: 3954M		Enclosure: OPSB	
Nameplate Data			575 V, 60 Hz: Single Voltage Motor		
Rated Output (HP)	40	Full Load Torque	60.6 LB-FT		
Volts	575	Start Configuration	direct on line		
Full Load Amps	36	Breakdown Torque	190 LB-FT		
R.P.M.	3500	Pull-up Torque	70.8 LB-FT		
Hz	60 Phase	3	Locked-rotor Torque	89.9 LB-FT	
NEMA Design Code	B KVA Code	G	Starting Current	227 A	
Service Factor (S.F.)	1.15	No-load Current	8.34 A		
NEMA Nom. Eff.	91.7 Power Factor	91	Line-line Res. @ 25°C	0.371 Ω	
Rating - Duty	40C AMB-CONT		Temp. Rise @ Rated Load	64°C	
S.F. Amps			Temp. Rise @ S.F. Load	81°C	
			Locked-rotor Power Factor	27.5	
			Rotor inertia	1.38 LB-FT ²	

Load Characteristics 575 V, 60 Hz, 40 HP

% of Rated Load	25	50	75	100	125	150	S.F.
Power Factor	69	85	90	91	91	90	91
Efficiency	93	94	93.3	92	90.1	88.3	90.9
Speed	3580	3557	3532	3503	3470	3435	3483
Line amperes	12.2	19.1	27.2	36.2	46.2	56.7	42.2

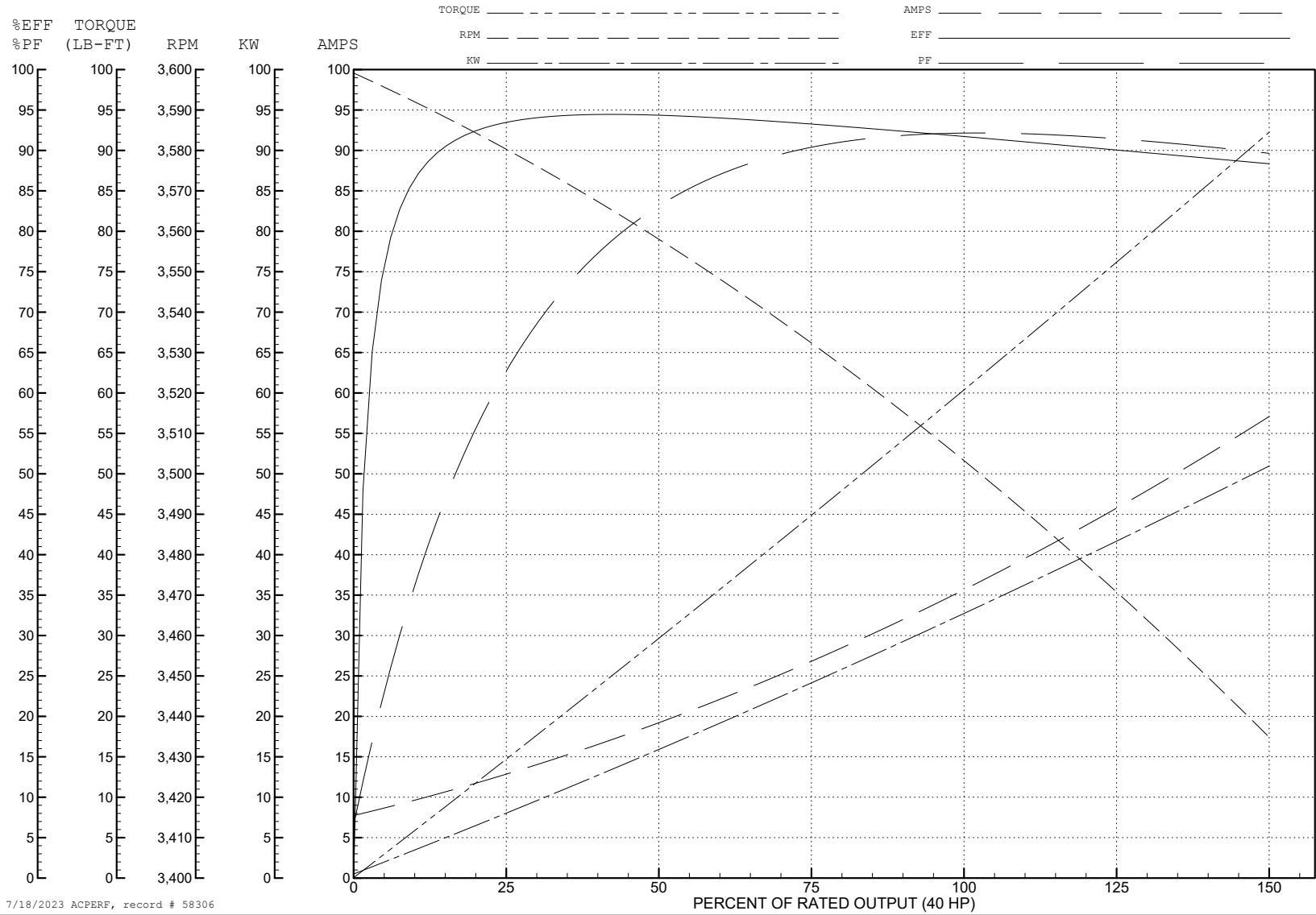
ABB Motors and Mechanical Inc.

WINDING # 39WGX991

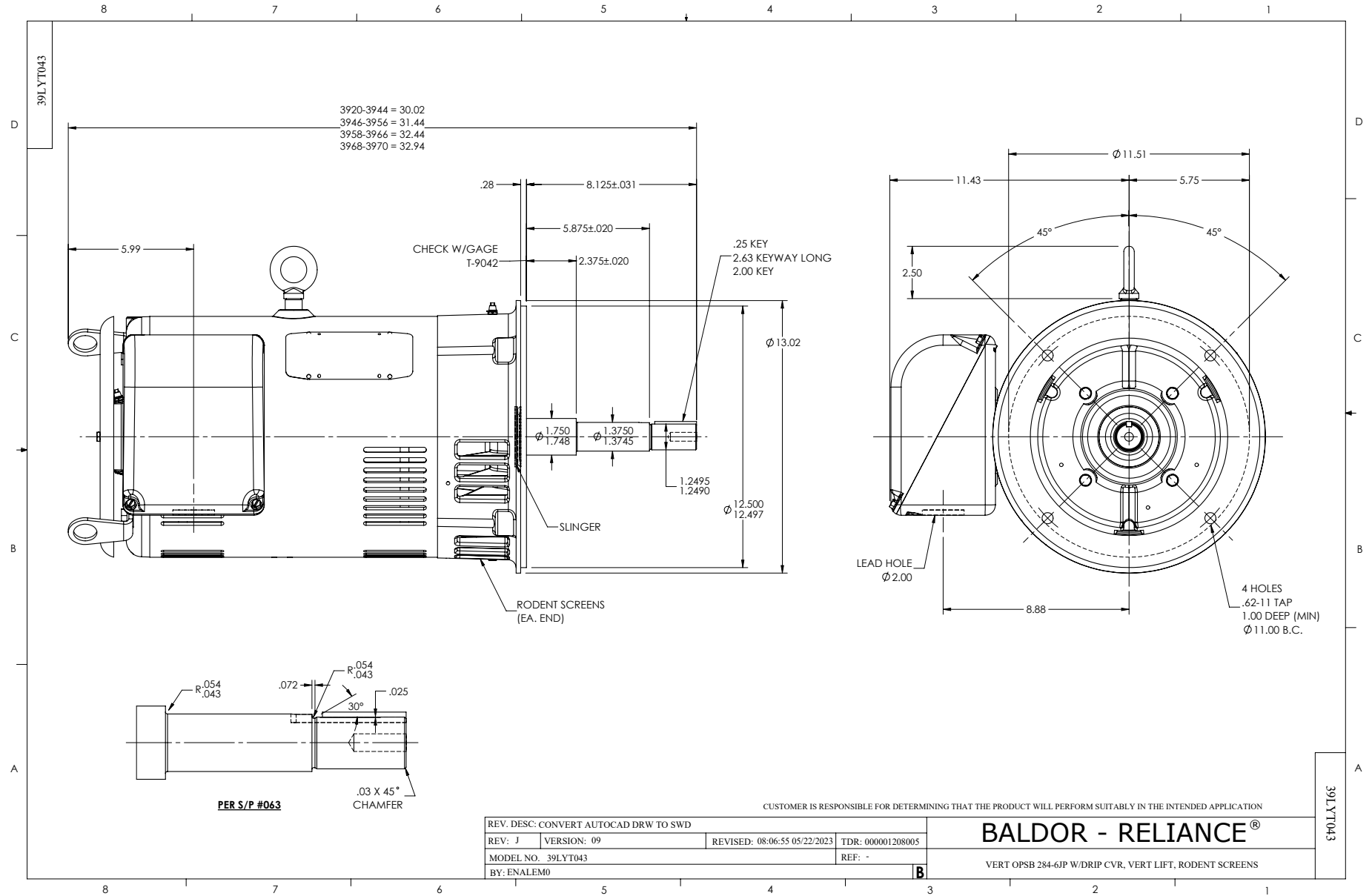
Typical performance - not guaranteed values.

40 HP 3 PH 60 HZ 3500 RPM 575 V 3954M

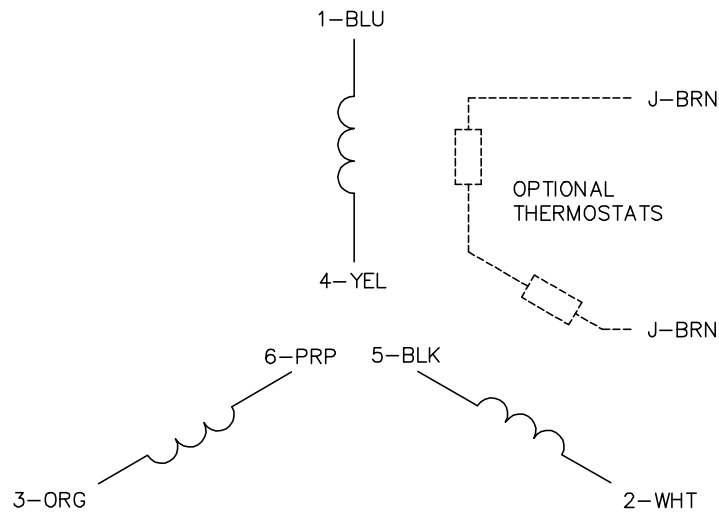
TORQUES (LB-FT): PO=190 PU=70.8 LR=89.9 LRA=227



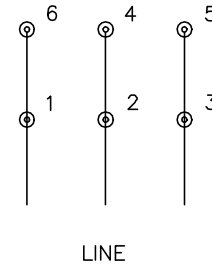
7/18/2023 ACPERF, record # 58306



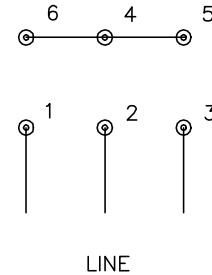
CD0382



RUN CONNECTION (1D)



START CONNECTION (1Y)



NOTES:

1. INTERCHANGE ANY TWO LINE LEADS TO REVERSE ROTATION.
2. OPTIONAL THERMOSTATS ARE PROVIDED WHEN SPECIFIED.
3. ACTUAL NUMBER OF INTERNAL PARALLEL CIRCUITS MAY BE A MULTIPLE OF THOSE SHOWN ABOVE.
4. LEAD COLORS ARE OPTIONAL. LEADS MUST ALWAYS BE NUMBERED AS SHOWN.
5. FOR ACROSS-THE-LINE STARTING, USE 'RUN' CONNECTION.

CD0382

REV. DESC: ADD CLASS CONN00000007		
REV. LTR: F	VERSION: 01	TDR: 000001099922
FILE: \AAA\00005\243	REVISED: 09:05:32 02/19/2019	BY: ENBRIRO
MTL: -	© □	

BALDOR - RELIANCE®

3PH, SV, 6 LEADS, Y START/D RUN

SH 1 of 1